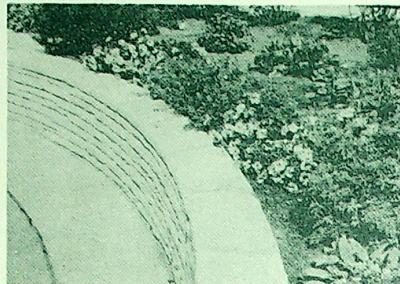


GARDEN FOR THE BLIND

"FOR THE GLORY OF THE GARDEN GLORIFIETH EVERY ONE"

This beautiful garden, sponsored by the Woman's Board of the Chicago Horticultural Society was created, as a living, tangible expression of their interest, for the pleasure and benefit



RAISED BEDS OF FRAGRANT HERBS

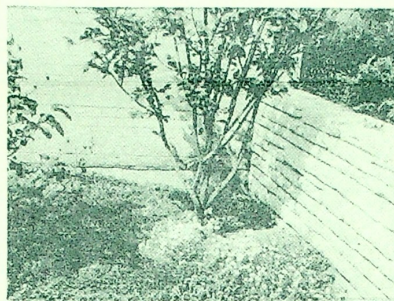
of those without sight. In seeking to perpetuate the art of horticulture at its highest level, to give point and continuity to the work while rendering, at the same time, invaluable service to others, the establishing of a garden for Blind people was a happy choice.

Immediately adjoining the Chicago Lighthouse for the Blind at 1850 West Roosevelt Road in Chicago, in the area of the West Side Medical Center District, this acre and a half of garden offers, by its accessibility, a unique service to the Lighthouse in its training program for Blind people.

Designed with vision and imagination on clean, simple sweeping lines, perfectly in keeping with the modernity of the building, the Garden, in the words of the architect, Harold Klopp "is more than something to look at; it is rich in the fragrance of plants and earth, in the sound of running water, the song of birds, the whispering of foliage movement; luxurious in the textures of plants, stone,

gravel and grass - a place to relax, rest and play; a garden pleasing to all the senses."

Over a thousand herb plants, pungently fragrant and exciting in texture fill the raised beds surrounding the broad terrace; wide, smooth, paths, comfortable benches, shade trees and flowering shrubs are an inviting note; as in any garden, a succession of bloom has been planned - early violets, hyacinths, forget-me-not and lily-of-the-valley are quickly followed by gay tulips, crisp, colorful peonies and fragile iris; later, the heady scent of Regal lilies, the velvety pansies, hemerocallis, bril-



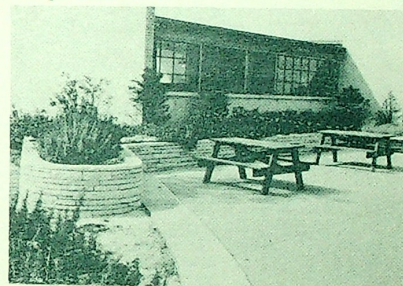
SUNNY CORNER OF THE GARDEN

liant petunias spilling over a wall, all combine not only to intrigue the eye but to create a feeling that one moves in an aura of quiet beauty. The spacious recreational areas, in grass and gravel, provide ample room for picnics, games and, eventually barbecues for the many groups of blind persons and their escorts, in the Chicago area, to whom the Garden is available. It is our hope that it will open many new avenues of interest to those who use it.

Because the Garden is open only to blind people, the Woman's Board has arranged with the Lighthouse for tours of the Garden and the Lighthouse, for your participation. Tours will be conducted by trained guides who will emphasize special features and discuss plant material, much of which is unique in this area. All plants are plainly labeled for easy identification, thus making the tour an educational as well as recreational and philanthropic experience. The very nominal fee charged will be used for Garden maintenance.

Already, many in the Chicago area have shared in the building of this Garden, by their gifts, large and small, of time, material and money; now, you are invited to have a part as well, by taking advantage of these tours through your clubs, church groups, garden circles, fraternal or other organizational affiliations.

As the Garden matures, repeating Nature's miracle cycle unendingly, it will become, year by year, more firmly integrated with the great work of the Lighthouse; as a component of our future great Medical Center, the Garden for the Blind will play an important role.



RECREATIONAL TERRACE

GARDEN FOR THE BLIND

1850 West Roosevelt Road, Chicago

Sponsored By

WOMAN'S BOARD - CHICAGO HORTICULTURAL SOCIETY
116 So. Michigan Avenue - Chicago 3, Illinois - Dearborn 2-3498

TOUR CHAIRMAN - MRS. LOYAL NUTTING

1114 PARK AVENUE - RIVER FOREST, ILLINOIS

I WISH TO ARRANGE FOR A TOUR OF THE GARDEN FOR THE
BLIND ON.....FOR.....PERSONS
AT FIFTY CENTS EACH.

Name.....

Address.....

City and State.....

Organization.....

GARDEN FOR THE BLIND

1850 West Roosevelt Road, Chicago

Sponsored By

WOMAN'S BOARD - CHICAGO HORTICULTURAL SOCIETY
116 So. Michigan Avenue - Chicago 3, Illinois - Dearborn 2-3498

TOUR CHAIRMAN - MRS. LOYAL NUTTING

1114 PARK AVENUE - RIVER FOREST, ILLINOIS

I WISH TO ARRANGE FOR A TOUR OF THE GARDEN FOR THE
BLIND ON.....FOR.....PERSONS
AT FIFTY CENTS EACH.

Name.....

Address.....

City and State.....

Organization.....

WOMAN'S BOARD

OFFICERS

MRS. ALBERT D. FARWELL MRS. C. KENNETH HUNTER
 THOMAS J. REEDY PARKER JACOBSEN
 PAUL M. ANGLE WALTER A. KRAFT
 TODD A. EBBERS LAWRENCE F. MCCLURE
 AUSTIN M. ZIMMERMAN EDWARD MORRIS
 MEMBERS LOYAL S. NUTTING
 JOHN OLSON
 ROY J. PIEHL
 JOHN T. PIRIE, JR.
 FRED A. PRESTON
 GEORGE A. SANFORD
 FREDERICK J. SPRING
 PAUL CURTIS
 ARTHUR F. FRITZ
 WENDELL W. GOODPASTURE
 JOHN R. HEATH
 WILLIAM P. HERATY
 F. STUART YANTIS

WOMAN'S BOARD

OFFICERS

MRS. ALBERT D. FARWELL MRS. C. KENNETH HUNTER
 THOMAS J. REEDY PARKER JACOBSEN
 PAUL M. ANGLE WALTER A. KRAFT
 TODD A. EBBERS LAWRENCE F. MCCLURE
 AUSTIN M. ZIMMERMAN EDWARD MORRIS
 MEMBERS LOYAL S. NUTTING
 JOHN OLSON
 ROY J. PIEHL
 JOHN T. PIRIE, JR.
 FRED A. PRESTON
 GEORGE A. SANFORD
 FREDERICK J. SPRING
 PAUL CURTIS
 ARTHUR F. FRITZ
 WENDELL W. GOODPASTURE
 JOHN R. HEATH
 WILLIAM P. HERATY
 F. STUART YANTIS



116 S. MICHIGAN AVENUE
 CHICAGO 3, ILLINOIS
 SUITE 308-10

